

1. Please visit your Emory's Zoom home page press **Log In**

University

<https://emory.zoom.us/>

Healthcare

<https://emoryhealthcare.zoom.us/>

2. Please enter your **NetID/Password** and press **Login**

Network ID

Password

Login

3. Login to Office 365, click [here](#)

Emory Primary Email Address:

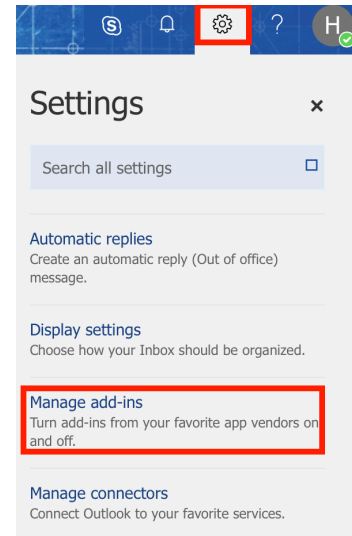
- Emory University (@emory.edu)
- Emory Healthcare (@emoryhealthcare.org)

NetID

Password

Sign in

4. Click on Settings and **Manage add-ins**



5. Click on **Admin-Managed**

All

My add-ins

Admin-managed

6. Look for the Zoom Add-in and press **Add**

Add

If you have any questions please contact videoservices@emory.edu