

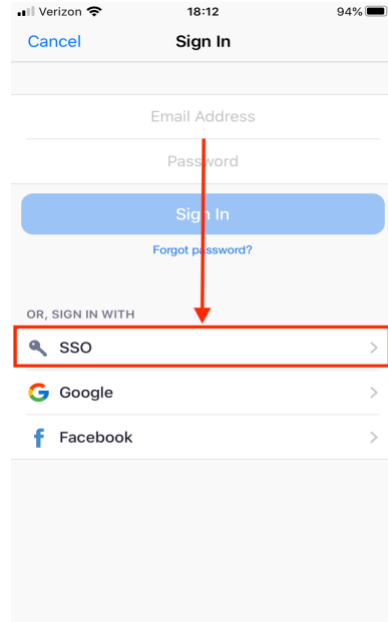


These instructions are for Android or iOS phones

1. Click on Sign In



2. Click on SSO (Single Sign On)



3. Enter your company domain

University Users: emory

Healthcare Users: emoryhealthcare





4. Enter your Emory login credentials and press **Login**

University Users: NetID/Password

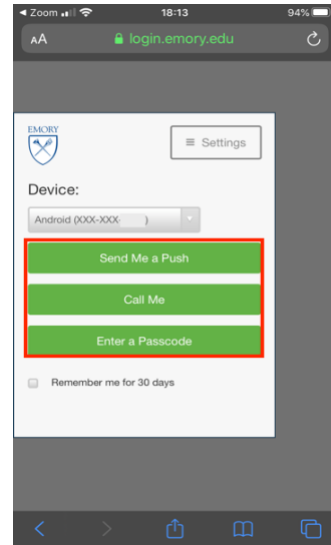
Healthcare Users: EHC ID/Password

Network ID

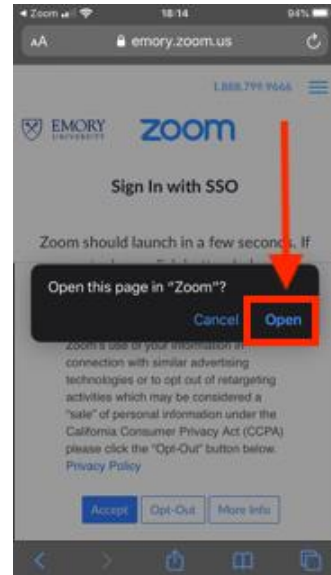
Password

Login

5. Choose one of the **DUO** options for double authentication



6. Click on **Open**



7. For more information regarding usage check the Getting Started Guides by clicking [Android](#) or [iOS](#)

If you have any questions, please contact VideoServices@emory.edu